

Thanks  
for visit



**VET'S LIFE SCIENCES PHARMA**

E-mail : [Info@vetlivesciencespharma.com](mailto:Info@vetlivesciencespharma.com)

Web : [www.vlspharma.com](http://www.vlspharma.com), Customer : 8318101052



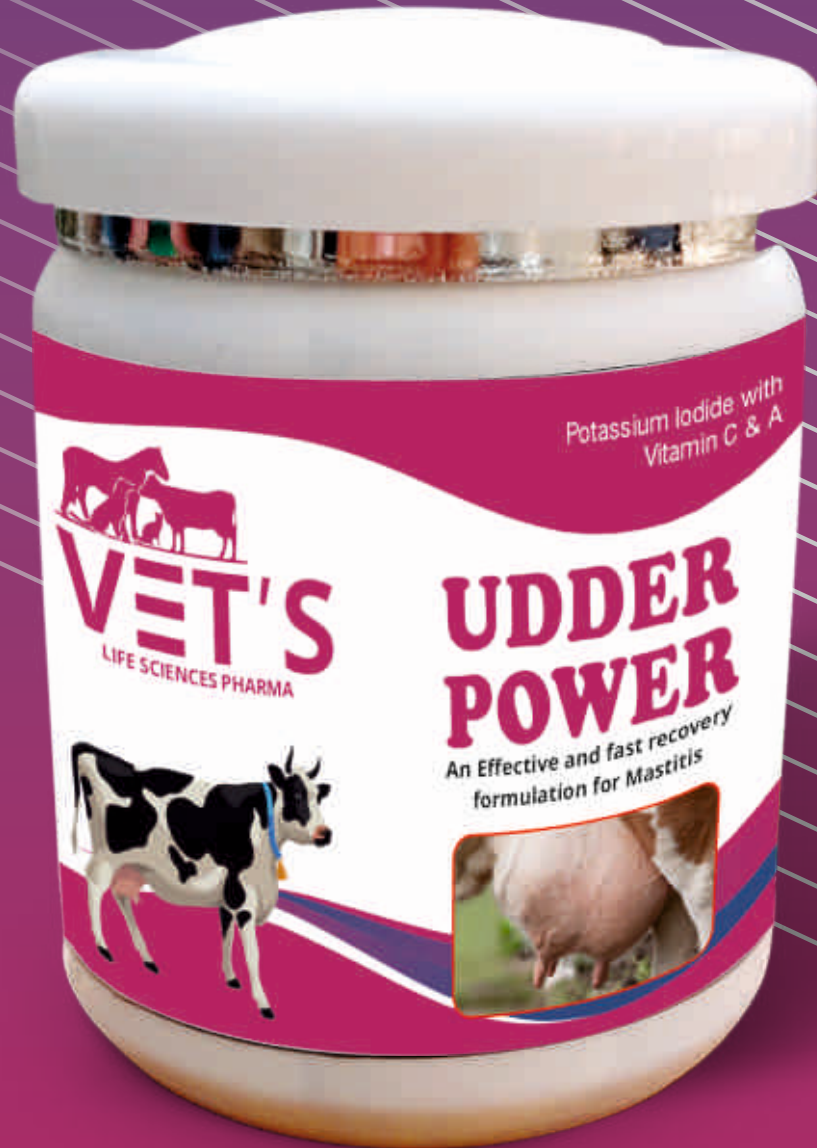
E-mail : [Info@vetlivesciencespharma.com](mailto:Info@vetlivesciencespharma.com), Web : [www.vlspharma.com](http://www.vlspharma.com), Customer : 8318101052



Potassium Iodide with Vitamin C & A

# UDDER POWER

An Effective and fast recovery formulation for Mastitis



50 gm.



Potassium Iodide with Vitamin C & A

# UDDER POWER

An Effective and fast recovery formulation for Mastitis

Each 50gm Contains:	
Serratiopeptidase	200 mg
Potassium Iodide	15 mg
Vitamin A	77000 I.U
Vitamin D3	22000 I.U
Vitamin E	1100 I.U
Vitamin H (Biotin)	50 mg
Vitamin K	5.5 mg
Riboflavin	220 mg
Cobalt Sulphate	55 mg
Manganese Sulphate	4400 mg
Trisodium Citrate Dihydrate	50 gm
Niacinamide	27.5 mg
Pantothenic Acid	24 mg
Copper Sulphate	55 mg
Live Yeast	1320 mg
DL-Methionine	55,000 million CFU
Zinc Sulphate	11 mg
Thiamine Hydrochloride	550 mg
Selenium	220 mg
	4.4 mg

#### Benefits:

- Helps in preventing clots & blood in milk.
- Helps in preventing tissue damage.
- Helps in reducing of udder oedema.
- Helps in reducing inflammation.
- Maintains the milk PH.

#### उपयोग विधि :

50 ग्राम पाउच प्रतिदिन 5-10 दिन तक





Combination of medicine from Homeopathic, Ayurvedic and Allopathic

# UDDER POWER

An Effective and fast recovery formulation for Mastitis



Combination of medicine from Homeopathic, Ayurvedic and Allopathic

# UDDER POWER

An Effective and fast recovery formulation for Mastitis

Alveoli in the udder are milk producing units

Better Alveolar health leads to better Milk production and udder health

Apart from Milk production Other Challengers During Mastitis Which Cause Losses in Dairy Cattle are...

Deleyed recovery in mastitis



Resistance to antibiotic

Low quality milk



Imbalance in the pH of the udder

Recurrence of Infection



Low Udder Immunity



Udderaceutical a New Dimension in Mastitis Therapy to Address the Challenges

### SERRATIOPEPTIDASE

Reduce inflammation and remove pus speed up the healing process

### TRISODIUM CITRATE

- Normalises milk pH
- Prevents bacterial multiplication
- Potentiates action of antibiotics

### VITAMINS AND METAL PROPIONATES WITH BIOTIN

- Regenrates keratin lining and improves udder immunity

**FASTER** recovery of Mastitis -

Adjunct to Antibiotic Therapy

For Faster Restoration of Milk Production

Faster Recovery of Mastitis

Feeding Direction 50g/day/animal



TSC (Trisodium Citrate) - Impreves Milk Quality

Vits & Metal propionates with Biotin - Prevents Recurrence of Mastitis

Presentation Box of 5 sachets of 50g each.



Instant Energy Tonic with Ionic Calcium

# CAL-POWER

Calcium Proteinated Energy Tonic *Gel*



300 gm.



Instant Energy Tonic with Ionic Calcium

# CAL-POWER

Calcium Proteinated Energy Tonic *Gel*

### MORE BENEFICIAL FOR :-

- MORE MILK
- HEALTHY LIVER
- NO MILK FEVER
- BALANCED ENERGY

### Composition :

Each 300 gm Contains :

Ionic Calcium	6600 mg.
Phosphorus	3400 mg.
Vitamin D3	32000 I.U.
Vitamin B12	400 mcg.
L-Arginine	160 mg.
Glactagogue	5%
Pueraria Mirifica ext.	200 mg.

### लाभ

- ➔ प्रसव के दौरान सहायक है।
- ➔ कैल्शियम की पूर्ति करता है।
- ➔ मिल्क फीवर में सहायक है।

### Direction for Usage

#### To Prevent Milk Fever

- Give one bottle at the first sign of calving and give another bottle 6 to 12 hours post calving. Repeat every 12 hours as needed.

#### For Regular Use

- For higher milk yield, administer one bottle per animal per day for 5-10 days or as directed by the veterinarian.





DOUBLE IONIC SHAKTI

# CAL-POWER

Calcium Proteinated Energy Tonic

Gel

## IONIC CALCIUM

- Physiologically active calcium
- Fast absorption and quickly normalizes serum calcium levels
- Maintains normal calcium level for a longer duration

## CARBOHYDRATES AND GLUCONEOGENIC PRECURSORS

- Provides instant energy
- Helps to maintain serum glucose level
- Prevents ketosis

## IONIC MAGNESIUM

- For enhanced calcium absorption
- Recovery from nervous symptoms

## NIACINAMIDE

- Better energy supply
- Increases milk production
- Prevents ketosis

## ORAL IONIC MAGNESIUM

- Required for faster absorption of calcium ions into the cells
- Increases the ability of animal to mobilise calcium
- Required for ATP (energy) synthesis in body
- Necessary for nerve function and muscle contraction

## SUGGESTED USAGE

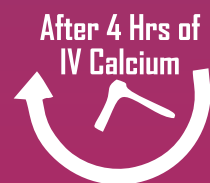
**300 ml.** Difficult Parturition : Retention of Placenta, Dystocia

Repeat After 24 Hrs

**300 ml.** Normal Parturition

Repeat After 48 Hrs

- ★ Helps to bring animal back to **FEED** and Optimum **MILK PRODUCTION**
- ★ Instant & longer serum calcium level with power of **Ionic Magnesium & Energy**



After 4 Hrs of IV Calcium

After IV Calcium Follow Up with **Cal-Power Gel** to Maintain Serum Calcium Level



DOUBLE IONIC SHAKTI

# CAL-POWER

Calcium Proteinated Energy Tonic

Gel

There are **Two Classical Options Available for Treatment**

**IV calcium is important but**

After IV Calcium, Calcium level drops below normal level in just 4 hours, hence need another IV Calcium injection or Oral Ionic Calcium

**Oral Ionic Calcium Alone**

• Absorption of Calcium ions is slow and lesser in concentration  
• Fails to maintain serum Calcium level for a longer duration of time

1  
2

Normal Oral Ionic Calcium Along with Ionic Magnesium and Energy

**Acute Shortage of Calcium and Energy is common in and around parturition**

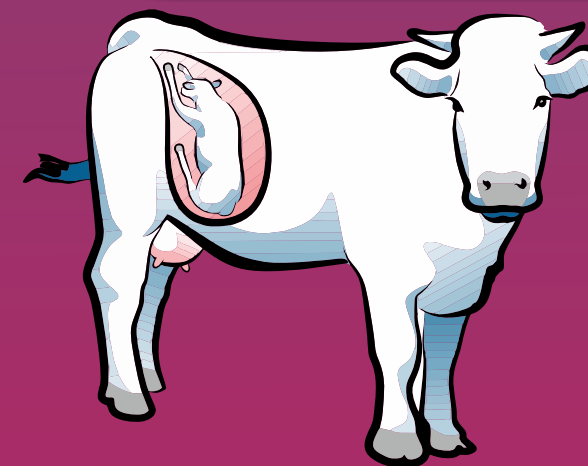
## SYMPTOMS

- Retention of Placenta
- Animal goes off feed
- Nervous symptoms like shivering, unable to stand
- Sudden drop in Milk Production

## LEADING

- Hypocalcaemia
- Negative Energy Balance
- Low Dry Matter Intake

Resulting to Metabolic disorders like Milk Fever and Ketosis





Balanced cattle feed supplement

# UTRI - POWER

A Polyherbal Ecboic & Best Solution for ROP & Pyometra



1000 ml



Balanced cattle feed supplement

# UTRI - POWER

A Polyherbal Ecboic & Best Solution for ROP & Pyometra

**MORE BENEFICIAL FOR :-**

- REPEAT BREEDER
- METRITIS • ENDOMETRITIS
- PYOMETRA • SILENT HEAT
- RETENTION OF PLACENTA
- IRREGULAR LOCHIAL DISCHARGE

**Each 50 ml Contains :**

Amla	200 mg
Ashok Chhal	2500 mg
Ashwagandha	400 mg
Baheda	200 mg
Bala Mool	100 mg
Bhuiamal	150 mg
Dashmool	1000 mg
Deodar	1500 mg
Guduchi	50 mg
Harde	200 mg
Jambu Beej	400 mg
Jasund	100 mg
Katuki	150 mg
Khair Ckkal	100 mg
Kutaj	100 mg
Lodhar	200 mg
Sariva	100 mg
Shalmali Gond	100 mg
Shatavari	400 mg
Vidanga	50 mg
Yashtimadhu	150 mg
Syrupy base	q.s

Animal Feed supplement

Not for Medicine Use

Keep in a cool, dry & dark place,

Protect from light.

Perservatives : Sodhium Benzoate , Sodium Methylparaben, Sodium Propylparaben & Bronopol

**Dosage**

Cow, Buffalo & Mare 100 ml

Sheep & Goats 20-25 ml

Pig 20-40 ml

The dose should be administered orally twice daily for 4-5 days after parturition, In case ROP, the dose should be trippled and repeated after every three hours until the foetal membranes are expelled out. Or as directed by the veterinarian





Liver Tonic Fortified with Silymarine

# LIV - POWER

Liquid Feed Supplements for Livestock



1 Ltr.



Liver Tonic Fortified with Silymarine

# LIV - POWER

Liquid Feed Supplements for Livestock

### COMPOSITION :

Each 30 ml. contains :

Calcium Lactate	300mg.
Ferrous Gluconate	200 mg.
Liver Fraction 2	150 mg.
Ferrous Chloride	80 mg.
Vit. H(Biotin)	100 mg.
Vit B1	2.5 mg.
Vit B2	45 mg.
Vit B6	12 mg.
Vit B12	50 mcg.
Nicotinamide	45 mg.
Nicotinic Acid	20 mg.
Riboflavine	5 mg.
Thiamine Hydrochloride	5 mg.
Silymarin	150 mg

Colour used : Caramel

### INDICATION

- Liver Dysfunctioning • Loss of appetite
- Hepatitis • Fatty Liver Syndrome (FLS)
- Kidney Syndrome (KS) • Poor F.C.R. & Livability

### Benefits:-

- Improve functional efficiency of liver • Growth Promoter
- Production booster • For a rich hair coat & health skin
- Drug induced hepatotoxicity • Promotes Digestibility
- Worms induced inappatance • Prevent Hepatitis
- Better utilization of nutrients and improved FCR
- Ensures optimum and uniform growth
- Improve performance

### Dosage

Chicks :	5 ml daily per 100 birds
Grower :	10 ml daily per 100 birds
Layer :	15-20 ml daily per 100 birds
Broilers :	5ml- 15ml per 100 birds
Breeder :	15ml-30ml per 100 birds
Or as directed by the veterinarian	

### MORE BENEFICIAL FOR :-

- IMPROVE DIGESTION
- PROTECT LIVER
- IMPROVE APPETITE
- IMPROVE PRODUCTIVITY

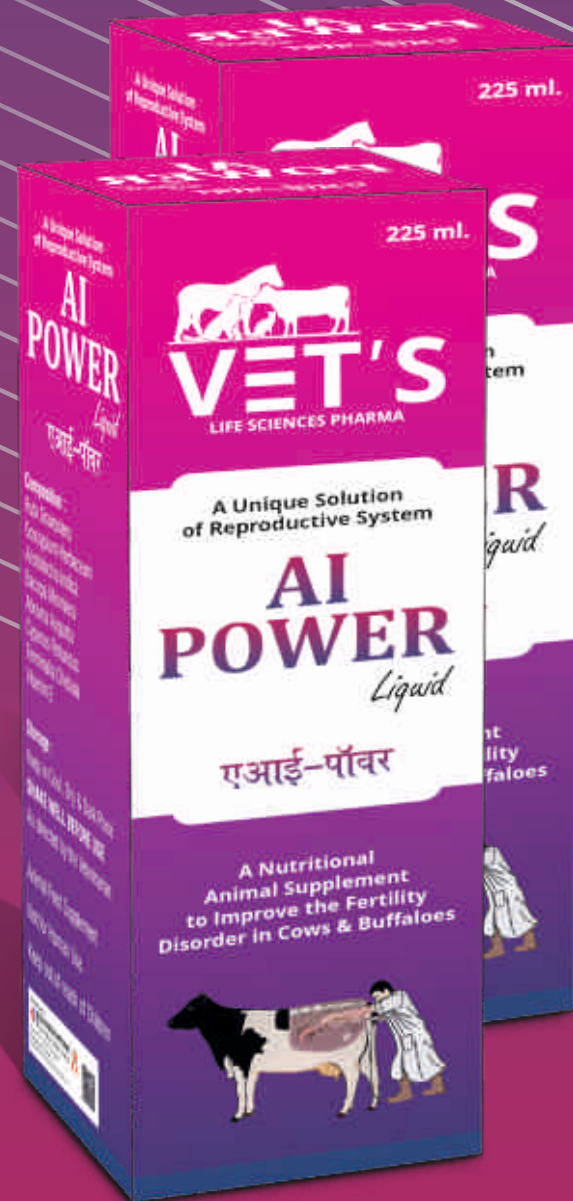




A Unique Solution of Reproductive System

# AI - POWER *Liquid*

A Nutritional Animal Supplement to Improve the Fertility Disorder in Cows & Buffaloes



225 ml.



A Unique Solution of Reproductive System

# AI - POWER

A Nutritional Animal Supplement to Improve the Fertility Disorder in Cows & Buffaloes

### Composition :

Ruta Graveolens  
Gossypium Herbaceum  
Aristolochia Indica  
Bacopa Monniera  
Abroma Augusta  
Cyperus Rotundus  
Terminalia Chebula  
Vitamin E

It improves uterine turgidity and helps in establishing a pregnancy.

- ➔ Improves motility of sperms and ovum.
- ➔ Tones up the uterine lining for implantation.
- ➔ It improves uterine health.
- ➔ Reduces chances of uterine infections.

### उपयोग:

- ए. आई. में सहायक
- बच्चेदानी की सुरक्षा में सहायक
- नर पशुओं के शुक्रणों की मात्रा बढ़ता है
- पशु के गर्भधारण में सहायक

Dosage : 225 ml to be given orally soon after A.I.







# HEALTH UP POWER PET

Multi-Vitamins for Dogs



200 ml.



# HEALTH UP POWER PET

Multi-Vitamins for Dogs



### Usage :

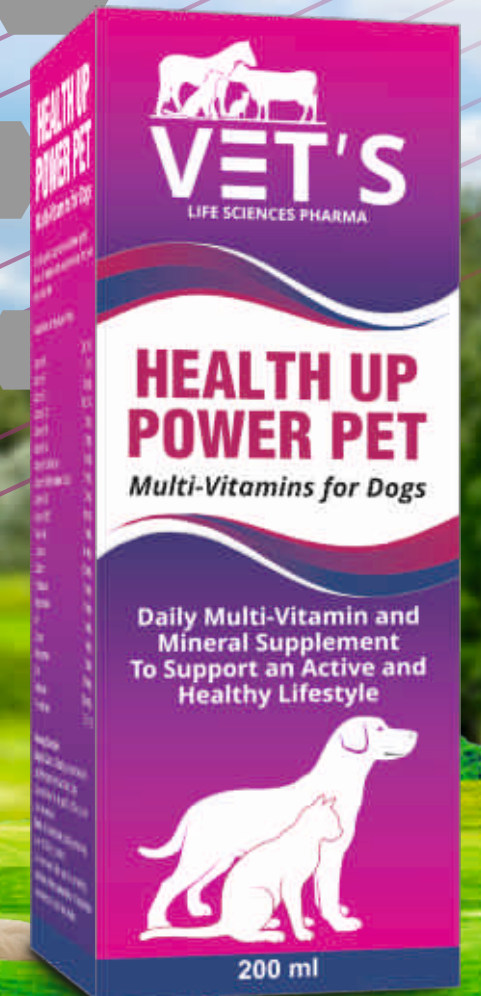
- Increases resistance to stress
- Boosts up the immune system
- Helps in digestion
- Maintains body tissues & function

### FEEDING DIRECTION

0.5 ml/kg b.wt.  
in feed

### PRESENTATION

200 ml





# CAL POWER PET

Organic Calcium Mineral Salt



200 ml.



# CAL POWER PET

Organic Calcium Mineral Salt

**CYPROHEPTADINE**

### Calcium :

- Essential for skeletal development
- Reduces the risk of osteoporosis
- For healthy muscle & Nerve function

### Phosphorus :

- For bone formation & Maintenance
- Helps structural in nucleic acid & Cell membrane
- For body pH regulations

### Vitamin D<sub>3</sub> :

- Absorption of calcium in the body & Promotes bone growth

### Vitamin B<sub>12</sub> :

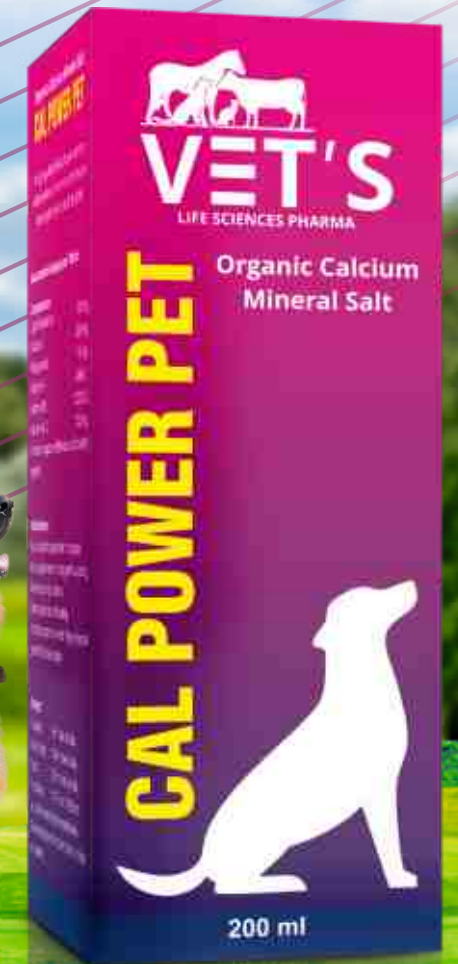
- Helps in cell division & absorption of iron

### FEEDING DIRECTION :

Pups & Cats : Syrup 5 ml • Briskits 1/2 daily  
Dogs : Syrup 10-20 ml • Briskits 1-2 daily

### PRESENTATION :

50 & 100 Briskits 360 ml Syrup





# RBC POWER PET

Iron, Folic Acid with Vitamin & Minerals Syrup



200 ml.



# RBC POWER PET

Iron, Folic Acid with Vitamin & Minerals Syrup

High bioavailability & Glycine chelated mineral for better absorption

No inter mineral interaction

No antagonism

**Chelated Ferrous & Copper :**

- 70% iron required for Erythropoiesis
- Copper helps in iron absorption & Supports in Erythropoiesis

**Vitamin B Complex :**

- For Proliferation, maturation, DNA synthesis in RBC
- Helps in hemoglobin synthesis

**Vitamin B Complex :**

- Helps in Erythropoietin (EOP) synthesis

**Use in**

- Nutritional anemia
- Parasitic anemia
- Pregnancy & Lactation
- Support in blood loss during surgery

**FEEDING DIRECTION :**

- Dogs : 5 ml/20Kg.b. wt. twice a day
- Cat : 0.5 ml/5Kg.b. wt. twice a day
- For puppies & kitten teed according to b. wt

**PRESENTATION :**

200 ml with measuring cap





For Better Health, Milk Yield and Reproductive Performance

Chelated  
**CALMIN-POWER**  
Gold

Glycine chelation Zinc, Copper, Cobalt

**Animal Feed Supplement**



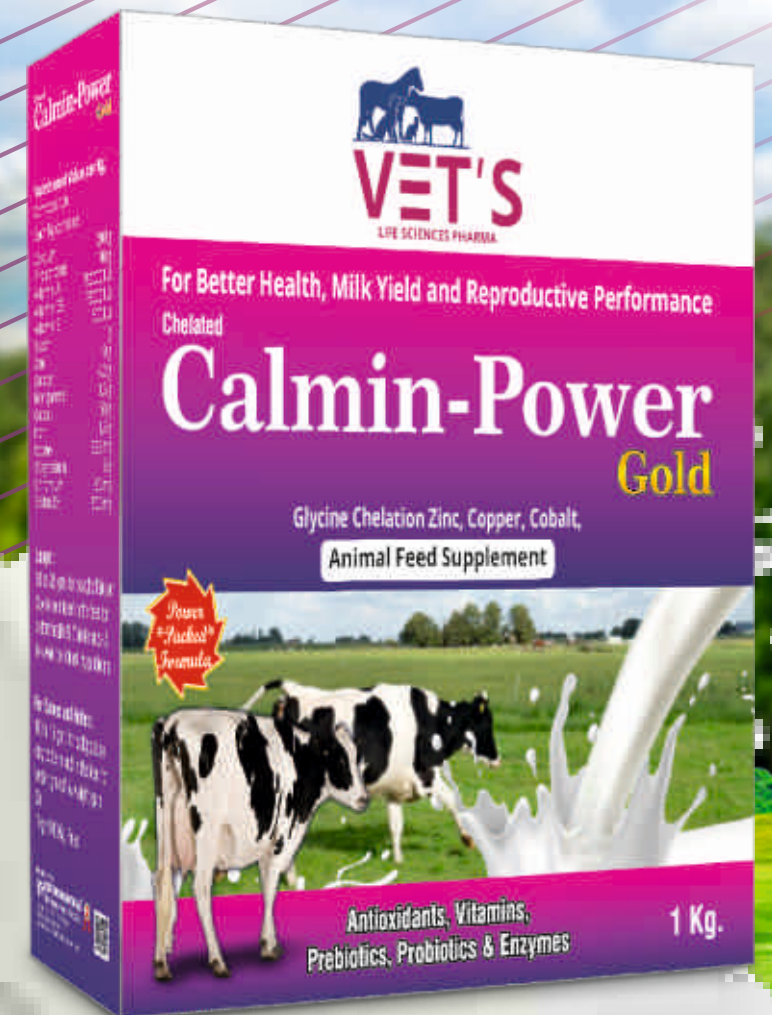
**1 Kg.**



For Better Health, Milk Yield and Reproductive Performance

Chelated  
**CALMIN-POWER**  
Gold

Essential Macro and Micro Minerals with  
Vitamins for Health, Fertility and Milk Production



**1 Kg.**



For Better Health, Milk Yield and Reproductive Performance

Chelated

# CALMIN-POWER Gold

Essential Macro and Micro Minerals with Vitamins for Health, Fertility and Milk Production

With High Levels of Chelated Zinc in Combination with Chelated Chromium

Combination of Chelated Zinc and Chelated Chromium Increases Glucose Utilization in Cells

## A to Z of Nutrition

### Role of Energy in Animal Body

- Reduce negative energy balance
- Improve immune function
- Improve reproductive efficiency
- Improve milk production

**1 Kg.**

**Calmin - Power** is combination of **Vitamins** and **Chelated minerals**



### MACRO MINERALS

- Calcium, Phosphorus Magnesium
- Helps in Milk Production & Uterine Muscle Tone

### MICRO MINERALS

- Zing, Chromium, Copper Cobalt, Manganese, Iron, Iodine
- Helps in Reproduction and Metabolism

### VITAMINS

- A, D3, E, NIACIN
- Helps in Conception and Immunity

### BIOTIN

- Potent Antioxidant
- Helps in udder development and Rumen digestion

### Benefits :

- Improves overall Health, Growth and Immunity
- Prevents Anoestrus and Silent Heat
- Improves Conception rate
- Improves Milk Yield

### Usage :

Cattle & Buffalo : 30-50g/head per day  
 Sheep and Goat : 15g/head per day  
 For Ration : 1-2kg per 100 kg concentrate feed  
 Calf : 15g/head per day  
 or as advised by Veterinarian

The **A to Z** of Nutrition  
Circle of Nutrition is Complete





For Better Health, Milk Yield and Reproductive Performance

# RUMEN POWER

## Bolus

Animal Feed Supplement



10x4 Bolus



A Product to set rumen

# RUMEN POWER

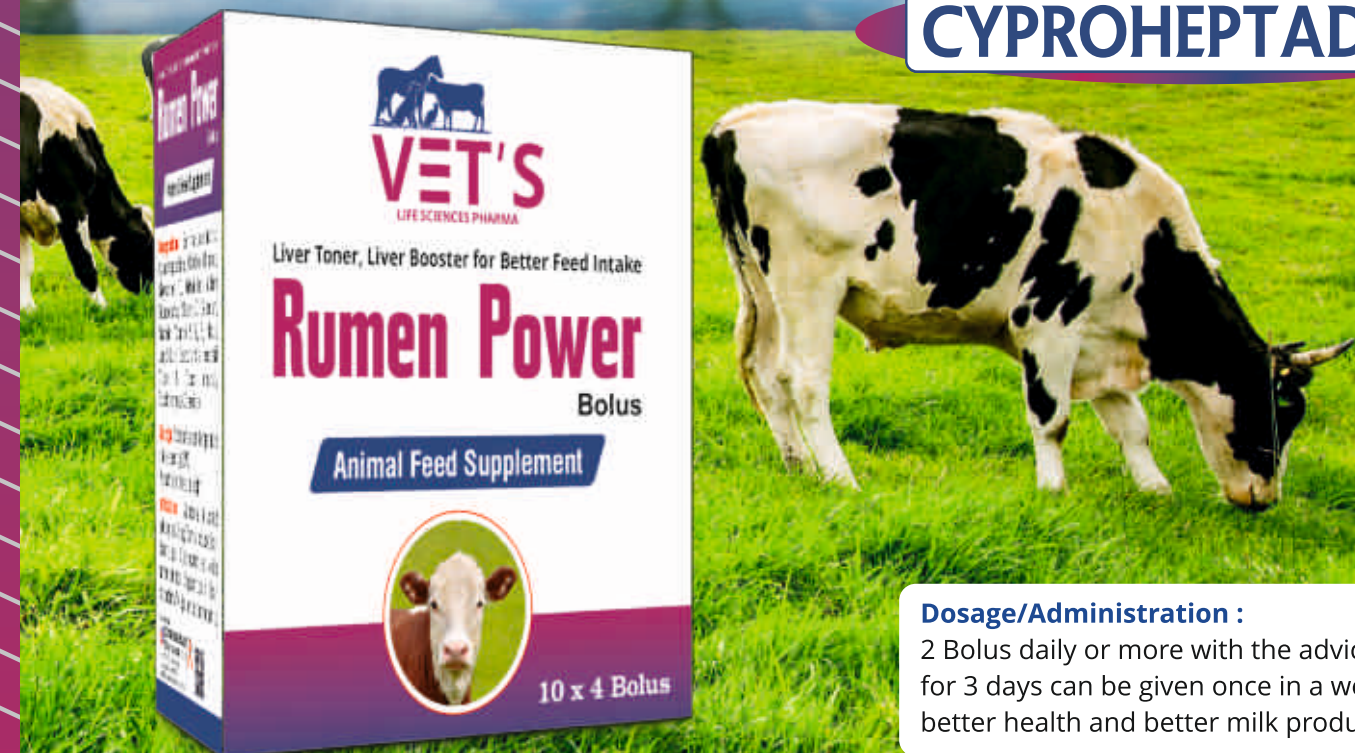
## Bolus

Animal Feed Supplement

### BENEFITS :

- Increases the number of microflora in rumen and activates them for optimum action.
- Initiates synthesis of B-complex in rumen by providing Cobalt.
- Enhances digestive process by strengthening enzyme.
- Regulates digestive system by providing minerals and vitamins through sea flora extract.
- Helps to save 8% energy by reducing Methane gas production due to Defaunation agent.
- Stimulates liver by Liver extract to help liver act optimally.
- Provides energy by converting Carbohydrates through ALPHA Amylase.
- Provides enzymes for ruminal activity and functions.

CYPROHEPTADINE



### Dosage/Administration :

2 Bolus daily or more with the advice of doctor for 3 days can be given once in a week 2 bolus for better health and better milk production.